



SUPREMEBOATS

2024 SURF WAKE RIDE

SURF WAKE RIDE

2 WELCOME
TO
2024

4 MOST
VALUABLE
TOWBOAT

16 BUILDING
GREAT
BOATS

20 MAKING
LIVES
BETTER

24 SURF
WAKE
RIDE

34 2024
MODEL
LINE-UP

44 COLORS
GELCOAT
FEATURES

46 SPECS
AND
OPTIONS



SURF WAKE RIDE REPEAT



The joy of water sports is found in the moment, whether you're watching from inside the boat, driving, or on the water. The cares of the world fall away when you're on the water, and at Supreme we are committed to make boats that enable you to do just that. We see our boats as an investment – in your joy and peace of mind and, ultimately, as a tool for a positive change in your life. That's what's behind the care we take with each buyer and each custom boat we build. We are passionate about building great boats. As our customer, we consider you family, and we only want the best for our families.





OUR SUCCESS RUNS DEEP

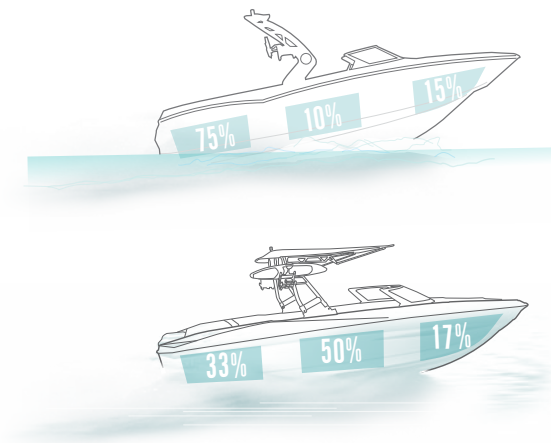
It is no secret that Supreme builds boats with superior surfability. The secret behind our amazing waves is the modified deep-v hull design built into the Tapered-V and EZ-V running surfaces. It beats a flat hull every time it comes to shaping wakes to the specifications you want for your performance.

With double the degree of V (20 degrees of deadrise) of our competitors, our modified deep-v starts at water level and creates a smooth rough-water ride. The 'modified' aspect of this design adds balance to the hull to guard against side-to-side weight shift negatively impacting the water behind the boat. Surfability is expanded further in our ZS232 and ZS212 models with the Tapered-V Hull design, which seats the rear of the boat lower in the water when it is weighted, creating more water displacement with less weight and intensifying the waves and wakes produced.

The EZ-V Hull under the S220, S240 and ZS252 is just that, easy. Supreme's EZ-V Hull Design gets you started easily but can take you all the way to "the zone". The EZ-V Hull displaces water to create a surfable wave right off the trailer.

BALLAST IS KEY TO GREAT WAVES

The idea of creating waves using ballast isn't new. But not all ballast options are created equal. At Supreme, we distribute our ballast options evenly throughout the boat for a low bow rise smooth ride and to displace the entire running surface, not just portions of it. The result is a nice, long wave with consistent push from face to curl. This also gives you options for finding your surfing sweet spot – whether you prefer to be right behind the boat or 20 feet back. With our QuickSurf, Zero Off Speed Control, Stinger Wake Plate or available Silent Stinger, you have unmatched control over height, length and shape of the wave.





RIDE A WAVE STYLED BY YOU

Our adjustable ballast options let you style your perfect wave. Depending on which boat you choose, we offer up to 5100 pounds of ballast in as many as six locations, evenly distributed throughout the hull. Each can be individually pumped to help you dial-in your ideal wave. The ballast, combined with our available QuickSurf system forms the wave. Adjust the shape with the Stinger Wake Plate or Silent Stinger option. Pick the height and length of your wave with Zero Off Speed Control. What does this mean to your performance? Simply put, our waves can grow with you. Start out with a mellow wave and find your comfort zone. Increase the steepness as your expertise grows and you want to push your limits. It's up to you, thanks to the flexibility of our system.



WORLD CLASS MEANS SOMETHING TO US

Our 2024 Supreme Boats brand may be optimized for wake surfing, but our wakes are just as exceptional for wake boarding because both are world class. The ease of our QuickSurf System allows you to toggle between surfing and wake boarding with the press of the touch screen. You can precisely manage the Supreme wake shape at any Zero Off speed setting with easy ballast and Stinger or optional Silent Stinger Wake Plate adjustment. When you you can dial in the wake that enhances your performance, you can dial in the fun. With Supreme, you can feel confident mixing it up between surfing and boarding knowing you will have the best possible performance for both.





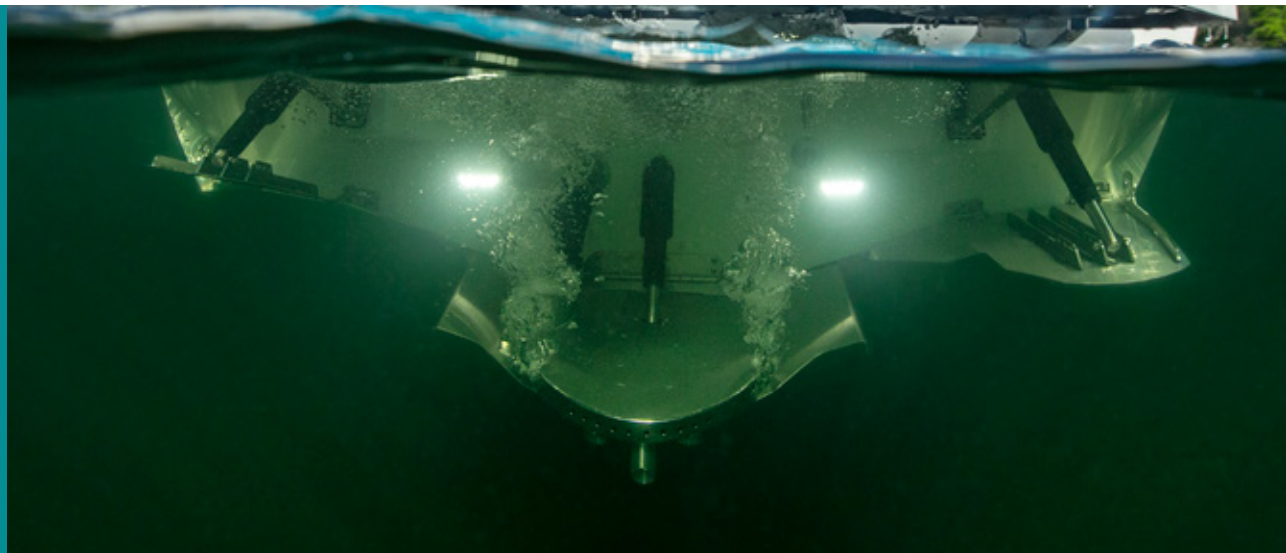
50% MORE FUEL EFFICIENT THAN OTHER BOATS

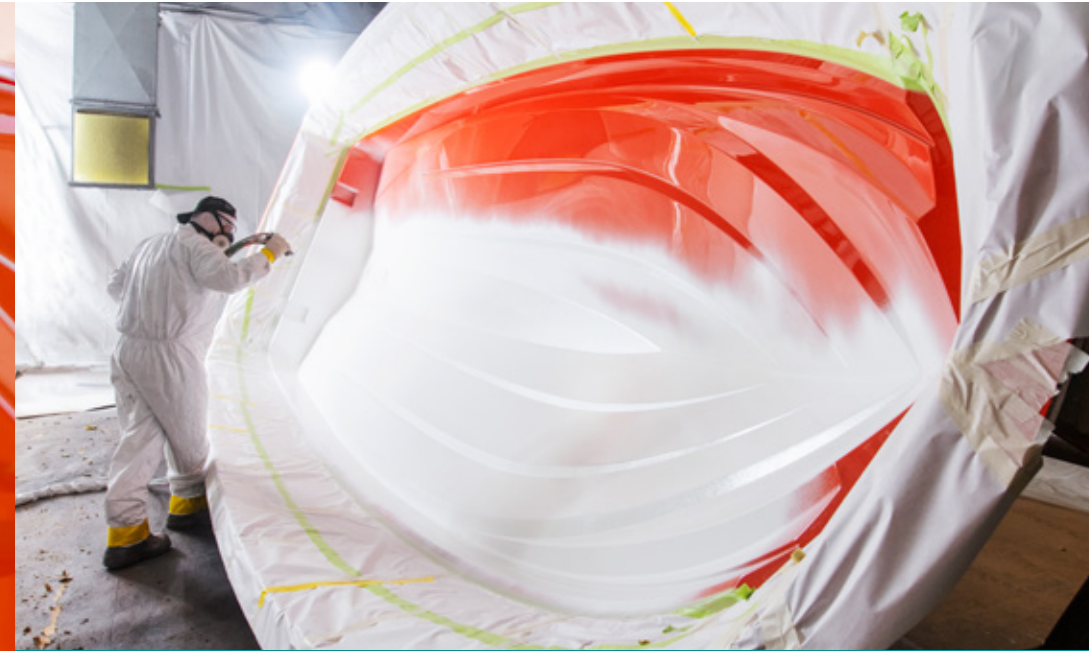
Our boats are up to 50 percent more fuel efficient than our competitors. While this fuel savings reduces the cost of ownership of a Supreme boat, the biggest advantage to Supreme owners is more time on the water with family and friends. You don't have to cut the day short or waste time going back and forth to the gas dock. We designed for optimal performance and created a design that reduces both engine noise and engine strain, even with fully loaded ballast.



THERE WILL BE PLENTY OF CONVERSATIONS ABOUT THIS QUIET RIDE

We design and build Supreme boats with ultra-low noise levels in mind. In fact, we have done such a good job keeping the decibel levels down you will find you can use your “indoor” voice to communicate, unless, of course, your boat mates are rowdy! We create quiet through efficient level-running hull design that requires much lower engine RPM to power even when weighted, unibody construction that eliminates water and engine vibration noise and our available Patented Silent Stinger Wake Plate Exhaust System that dampens engine noise. The decibel level in our boats is as low as 74 decibels in the driver’s seat. That’s not the level when idling. That’s the level when pulling a wake surfer at 2800 rpms around 11 mph. It’s about the sound of your average dishwasher. So, leave your ear plugs at home and prepare for the ultimate ride and relaxation.





YOU SURF WITH YOUR EYES FIRST

We want your Supreme to look like the serious wake surf boat it is, even at first glance. We pour our passion into every step that could possibly affect the exterior finish of your Supreme, including those seemingly small steps like meticulous mold preparation. We also spray gel coat in optimum conditions to give your Supreme boat the best opportunity at sustained deep luster finish. We also seek out opportunities for improvement when your Supreme is buffed to a high shine in the Pre-Detail process. We identify imperfections in the gel coat and fix them before the interior and exterior components make it onto the boat. This is an extra step compared to our competitors processes, but it is worth it to us to make sure your Supreme looks as good as it performs.





SOLID CONSTRUCTION IS AT OUR CORE

The shape of the running surface plays a part in Supreme strength. From the deep-v keel, to the sharpened strakes to the specifically shaped outside chines, Supreme's EZ-V and Tapered-V Hulls are designed to cut through the surface and dissipate the shock of rough water without shaking the structure of the boat or the passengers inside. Our precise chassis construction sets up six vibration-absorbing mounting points balanced to efficiently mount Supreme GM Marine power marinated engines by PCM.





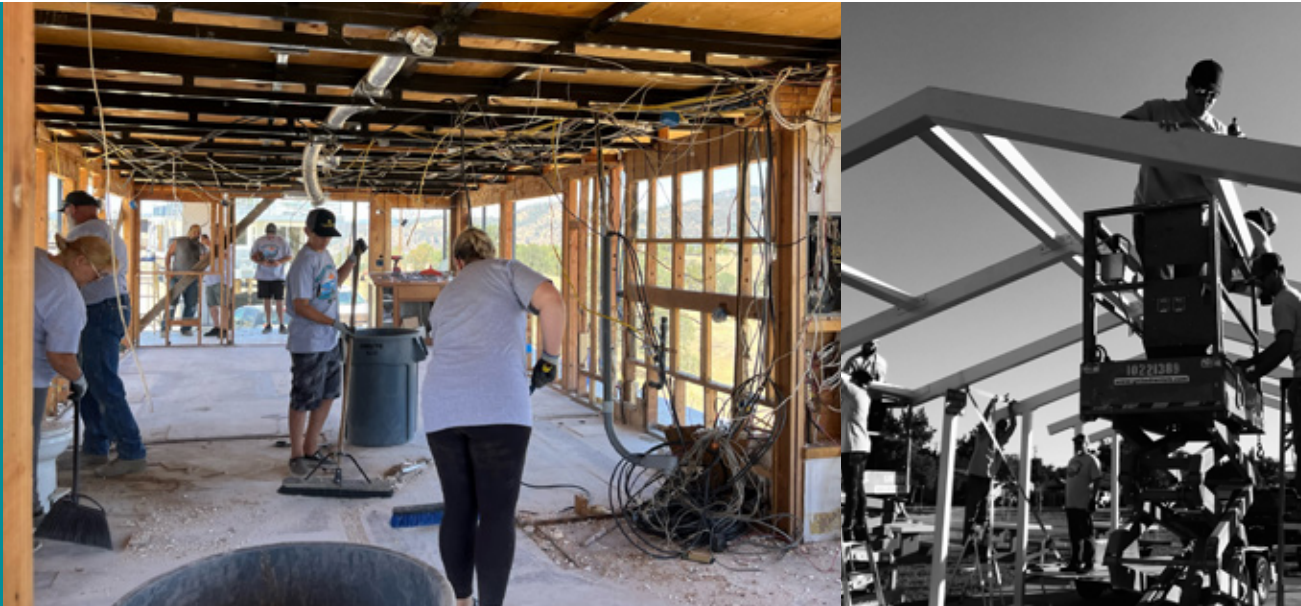
SMILES REFLECT OUR SUCCESS

At Supreme we measure success not just in sales and satisfied customers, but also in the smiles we create. We call it the Supreme Smile – that look of pleasure that appears when you ride behind, drive, or spend uninterrupted time with friends and family in our towboats. Your smiles are contagious and we aim to spread that contagion. Whether you are a beginner or a pro, Supreme offers the perfect opportunity for making life better. With our 5-year warranty, ownership of a world class Supreme boat also comes with the kind of peace of mind that enables one to relax and enjoy the ride.



YOUR BOAT OUR PASSION

Surf, wake, and ride with Supreme is not solely about the boat's performance; it's about enhancing lives. Supreme, the most valuable towboat, elevates the ownership experience. Owning a Supreme boat means embracing freedom, ensuring peace of mind and investing in family happiness. It's a catalyst for positive change. We bear a profound responsibility as creators of a vehicle that transcends water sports, treating each Supreme boat and the families it touches with exceptional care. Our success is gauged in the smiles it generates, the genuine manifestations of joy, affirming our commitment to not just crafting boats but enriching lives. We measure the success of this objective in smiles, Supreme smiles. These involuntary indicators of joy are the humanization of God's glory and the evidence we are on our path of not just making boats but making life better.













\$2220



LENGTH 22' | BEAM 102" | DRAFT 36" | WEIGHT 5400 LBS | FUEL CAPACITY 70 GAL
SEATING CAPACITY 14 | BALLAST 4400 LBS | STANDARD TORQUE 409 FT/LB

\$2440



LENGTH 24' | BEAM 102" | DRAFT 36" | WEIGHT 5700 LBS | FUEL CAPACITY 70 GAL
SEATING CAPACITY 16 | BALLAST 4800 LBS | STANDARD TORQUE 409 FT/LB

ZS232



LENGTH 23'2" | BEAM 102" | DRAFT 36" | WEIGHT 5450 LBS | FUEL CAPACITY 70 GAL
SEATING CAPACITY 14 | BALLAST 4900 LBS | STANDARD TORQUE 409 FT/LB

ZS252



LENGTH 25'2" | BEAM 102" | DRAFT 36" | WEIGHT 5900 LBS | FUEL CAPACITY 70 GAL
SEATING CAPACITY 17 | BALLAST 5100 LBS | STANDARD TORQUE 450 FT/LB



S220 | EASY TO BE SUPREME

The 22-foot S220 goes so far beyond “value class” that it’s redesigning the category. With an interior that accommodates 14 people, the durable Comfort Strong Marine Vinyl by Spradling, sewn together with indestructible Gore Tena Thread by GORETEX, screams luxury. Customize your color scheme to achieve the look you want, and it will be clear this is no cookie cutter boat. The new EZ-V hull design is home to as much as 4400 pounds of ballast in six independently pumped ballast locations. You will be able to create a surfable wave the first time you are on the water. Choose between the new Supreme Shine tower (SST) made of stainless steel in the USA or the upgraded F-Series Tower by Roswell with gel coat color-matched tower shields, to give your S220 exactly the look you want.



S240 | SURFERS' DELIGHT

The S240 is a remarkable “value class” boat that can comfortably accommodate up to 16 people and their gear. Beyond the attractive appearance, it offers exceptional functionality. Tailor the seating arrangement to your needs with options like the available slide seat, reversible lean backs and table. It comes with the Supreme Shine Tower (SST), crafted entirely from stainless steel in the USA, or upgrade to the optional F-Series Tower by Roswell with a choice of black or white, with customizable tower accents to match the boat’s exterior. The EZ-V hull takes you from easy to “the zone” behind the S240. With up to 4800 pounds of ballast, it’s perfect for both pro-level surfing and beginners as well as slower wakeboard speeds. New this year, the Battery Management System (BMS) is conveniently located in the glove box, featuring a PDM breaker panel for easy on water power management. You can opt for driver’s side stereo remote with a volume knob to control the new Eco Back Bone Stereo System by Wet Sounds.



ZS232 | DISTINCTIVE PERFORMANCE

The ZS232, with its sharp wide bow tapering toward a high transom, creates a unique dragster-like rake that delivers one message: high performance. There is purpose behind the dock appeal with a bow and transom optimized to prevent rollers from coming over the front or the back. This 23-foot-2-inch ZS model offers up to 4900 pounds of ballast in six individually pumped locations distributed evenly throughout the boat and comfortably accommodates up to 14 people and their gear. The 2024 ZS232 creates long pushy waves and poppy symmetrical wakes. That means you can dial in exactly the wave you want. New for 2024 is the Battery Management System (BMS) with PDM breaker panel mounted in the glove box. This new feature is joined by the Eco Back Bone Stereo system by Wet Sounds. This accessible location makes serviceability a breeze and allows you to isolate power consumption while on the water.



ZS252 | SMASH THE BUDGET BARRIER

The ZS252 is an incredible hulk of a value in wakeboard boats. Reinvigorated for 2024, the 25 foot two inch entry-level water sports boat offers the best wakes and waves in its class without a premium price. Built on the EZ-V Hull, you can move quickly into invigorating, surfable waves. With as much as 5100 pounds of available ballast evenly distributed in six individually controlled locations, it's easy to adjust waves to every level of performance for each of the 17 people this big boat can accommodate. Even at a value price, the ZS252 is a custom boat and you can choose from 31 stunning gel coat colors and two schemes to make it yours. Customizable seating options give you the perfect interior. And for 2024 the new Battery Management System (BMS) features a PDM breaker panel, conveniently located in the glove box. This allows you to isolate house power consumption, and enhances serviceability.

S220 | S240 Sharp



S220 | S240 Core



ZS232 | ZS252 Sharp



ZS232 | ZS2552 core



SUPREME HELPS YOU DO YOU

2024 Supreme boats offer waves and wakes that scale smoothly from first-timer to professional. These championship wake surfing boats also offer customizable cool that allows you to showcase your individual style and turn every head at the dock doing it.

Battery Management System



Supreme Decal



F-Series Tower w/ Colored Shields



Champ Stereo Tower Speakers



Silent Stinger Wake Plate



Bombshell 2.0 Board Racks



Slide Seat



Wireless Clamping Cell Phone Charger



QuickSurf Plates



ENGINES	S220	S240	ZS232	ZS252
Supreme Power by GM Marine Freshwater Cooled L96 6.0L/409lb-ft/1.72:1GR/1.25" DS (Optional Saltwater Package at Additional cost)	STD	STD	STD	NA
Supreme Power by PCM 100% Freshwater Cooled ZZ5 5.3L/400lb-ft/2:1GR/1.25" DS (Optional Saltwater Package at Additional cost)	OPT	OPT	OPT	OPT
Supreme Power by PCM 100% Freshwater Cooled ZZ6 6.2L/465lb-ft/1.72:1GR/1.25" DS (Optional Saltwater Package at Additional cost)	NA	OPT	OPT	OPT
Supreme Power by GM Marine Freshwater Cooled HO 6.0L/450lb-ft/1.72:1GR/1.25" DS (Optional Saltwater Package at Additional cost)	OPT	OPT	OPT	STD
ENGINE OPTIONS				
Engine Intake Water Strainer	STD	STD	STD	STD
Engine Flush Kit	STD	STD	STD	STD
Standard Prop / Acme 2829 16 x 15 on L96 or HO Acme 3077 4-Blade 17 x 15.5 on ZZ5 or ZZ6	STD	STD	STD	STD
Heavy Duty Prop / Acme 2907 16 x 13 on L96 & HO Acme 2829 4-Blade 16 x 15 on ZZ5 or ZZ6	OPT	OPT	OPT	OPT
Salt Water Package w/Engine Flush Kit and Zinc Anodes	OPT	OPT	OPT	OPT
GELCOAT SCHEME				
Core	STD	STD	STD	STD
Sharp	OPT	OPT	OPT	OPT
DECAL / GRAPHIC OPTION				
"Supreme" Silver Gloss Chromex Decals	STD	STD	STD	STD
"Supreme" Black Matte Chromex Decals	OPT	OPT	OPT	OPT
"Supreme" White Matte Chromex Decals	OPT	OPT	OPT	OPT
TOWER OPTIONS				
Supreme Shine Tower (SST) Stainless Steel w/ White or Black Base	STD	STD	STD	STD
F-Series Black or White Tower by Roswell	OPT	OPT	OPT	OPT
GATOR STEP FLOORING SCHEME				
Gator Step Standard Single Layer Shark Fin Color	STD	STD	STD	STD
Gator Step 2-Color Salute to Service (S2S) Cut w/ Lasered Woodgrain	OPT	OPT	OPT	OPT
Gator Step 2-Color Supreme Cut	OPT	OPT	OPT	OPT
Gator Step Standard Single Layer Shark Fin Color w/ Deck Kit	OPT	OPT	OPT	OPT
Gator Step Standard Single Layer Shark Fin Color w/ Deck Kit & Riser	OPT	OPT	OPT	OPT
STEREO				
Wet Sounds Back Bone Eco System, WS-BB-10 Black Box, AM/FM, Bluetooth and USB Input, In-Glove Box Face, Recon 6.5" (black/white) speakers and 4-channel OEM Amplifier	STD	STD	STD	STD
Supreme Champ System by Wet Sounds w/1 pair Pro Rev10 Wet Sounds Tower Spkrs, WS-BB-10 Black Box, 8" Interior Spkrs and 12" Sub (black/white)	OPT	OPT	OPT	OPT
Supreme Hero System by Wet Sounds w/2 pair REV 10 Tower Speakers, WS-BB-10 Black Box, with 8" Wet Sounds Interior Speakers, 2-12" REVO 12 HP Sub (black/white)	OPT	OPT	OPT	OPT
STEREO OPTIONS				
Driver's Remote w/ Volume Knob	STD	STD	STD	STD
Wet Sounds Supreme CHAMP Tower Speaker Cover Set	OPT	OPT	OPT	OPT
Wet Sounds Supreme HERO Tower Speaker Cover Set	OPT	OPT	OPT	OPT
TOWER ACCESSORIES				
BombShell 1.0 Strapless Racks by Roswell Swivel Lower Mount	OPT	OPT	OPT	OPT
Salute to Service Flag & Pole Package w/ Holders (Includes Supreme and US Flag)	OPT	OPT	OPT	OPT
Swivel Board Racks by Roswell, MAG,	OPT	OPT	OPT	OPT
WAKESPORTS OPTIONS				
Bow Ballast Hard Tank	STD	STD	STD	STD
SupremeFill Pumped Ballast	STD	STD	STD	STD
Bow Ballast Bag System	OPT	OPT	OPT	OPT
Supreme Plug-N-Play Rear Surf Ballast (With 2 Bags in boat)	OPT	OPT	OPT	OPT
Supreme Quick Surf System	OPT	OPT	OPT	OPT
CANVAS OPTIONS				
Bimini Top for F-Series Tower by Roswell w/ Surfboard Storage Sleeves (Black Only)	OPT	OPT	OPT	OPT
Bimini Top for F-Series Tower by Sewlong w/ Surfboard Storage Sleeves (Black Only)	OPT	OPT	OPT	OPT
Bimini Top for Supreme Shine Tower by SewLong w/ Surfboard Storage Sleeves (Black Only)	OPT	OPT	OPT	OPT
Boat Cover GRAY by Great Lakes w/HANG TYTE	OPT	OPT	OPT	OPT
Swimstep Cover GRAY by Great Lakes	OPT	OPT	OPT	OPT
RUB RAIL				
Stainless Steel Rub Rail Black or White	STD	STD	STD	STD

COMFORT / CONVENIENCE / STYLING	S220	S240	ZS232	ZS252
Depth Finder	STD	STD	STD	STD
Glovebox Battery Management System w/ PDM Reset Panel	STD	STD	STD	STD
OmniTouch 7" Touch Screen w/ ICE Stereo Control	STD	STD	STD	STD
One SmoothTrac Fin	STD	STD	STD	STD
Wake Plate	STD	STD	STD	STD
2nd SmoothTrac Fin	OPT	OPT	OPT	OPT
4 Pull up Cleats 6" (STD) + 2 Extra Pull-Out Cleats 6" (Option on Each Side Bow)	OPT	OPT	OPT	OPT
Bow Fill Cushion	OPT	OPT	OPT	OPT
Docking Lights	OPT	OPT	OPT	OPT
EU Package (Fireboy System, EU Documentation)	OPT	OPT	OPT	OPT
Grizzly 15qt cooler w/matching Gatorstep Non-skid	OPT	OPT	OPT	OPT
Grizzly 40qt cooler w/matching Gatorstep Non-skid	OPT	OPT	OPT	OPT
Heater: (1) Hot Tube & 2 Outlets	OPT	OPT	OPT	OPT
Ladder, Swimstep	OPT	OPT	OPT	OPT
Silent Stinger Wake Plate	OPT	OPT	OPT	OPT
Ski Pylon	OPT	OPT	OPT	OPT
Slide Seat Component: 1st Lean-back (must be ordered with slide seat w/ receptacles)	OPT	OPT	OPT	OPT
Slide Seat Component: 2nd Lean-back (must be ordered with slide seat w/ receptacles)	OPT	OPT	OPT	OPT
Slide Seat Component: Table (must be ordered with slide seat w/ receptacles)	OPT	OPT	OPT	OPT
Slide Seat w/ Component Receptacles, Slide Track and Limo Lighting	OPT	OPT	OPT	OPT
Supreme Removable Cooler by AO w/ Carbon Finish	OPT	OPT	OPT	OPT
Removable Pin Lounge Seat Hinges	OPT	OPT	OPT	OPT
Under Water Transom Lights (White Only)	OPT	OPT	OPT	OPT
Walk-through Wind Block	OPT	OPT	OPT	OPT
Waterproof Wireless Clamping Cell Phone Charger	OPT	OPT	OPT	OPT
REAR VIEW MIRROR				
Standard Rear View Mirror	STD	STD	STD	STD
PTM Edge 6" x 20" High Definition Panoramic Mirror & Flip Down Mount (Exch.)	OPT	OPT	OPT	OPT
2ND BATTERY PACKAGE				
2nd Battery Package with Control Center	STD	STD	STD	STD
2nd Battery Package with Control Center + Turbo M212 In boat Battery Charger 12v Dual 12 Amps	OPT	OPT	OPT	OPT
GPS OPTIONS				
Navionics US & Canada Maps for 7" OmniScreen GPS Mapping	OPT	OPT	OPT	OPT
SPEED CONTROL SYSTEMS				
Zero Off Pro GPS Cruise Control	STD	STD	STD	STD
TRAILER				
Tandem Axle Boatmate Trailer: 11 Gauge Steel, 5" Frame, Disc Brakes both Spring Axles, Large Prop Guard Rollers, Stainless Retractable Transom Straps (Pr.), 5-yr Warranty	STD	STD	STD	STD
TRAILER TOP COAT				
Boatmate Elite Shield Top Coat Paint	OPT	OPT	OPT	OPT
TRAILER TREAD				
Match GatorStep to Flooring on the rest of the order	STD	STD	STD	STD
Aluminum Tread Plate	OPT	OPT	OPT	OPT

NMMA Certified Boats & Trailers – Tested. Inspected. Respected.



While there are many factors to consider when you are buying a new boat, choosing NMMA Certified is one of the smartest decisions you can make. Every NMMA Certified boat undergoes tough, third-party inspections to ensure it meets stringent industry safety and construction standards set by the American Boat & Yacht Council (ABYC), ultimately exceeding the minimum requirements of the U.S. Coast Guard. That means you can be confident you are buying a boat from a manufacturer that has gone the extra mile to earn the right to display the NMMA Certified logo. To learn more about NMMA Certification, visit DiscoverBoating.com/certification.

Fineline Industries LLC reserves the right to change model specifications, standard and optional equipment, color schemes and pricing at any time without notice or incurring obligations. It is the Dealer's responsibility to adhere to all State and Local regulations and laws governing minimum requirements needed on each boat, such as trailer brakes, kill switches and other safety equipment.





wsia WAKE RESPONSIBLY

Stay at least 200 feet away from shoreline, docks or other structures. Keep music at reasonable levels. Sound travels well over water. If it's loud enough to hear 80 feet back, it is likely loud enough for homeowners to hear, too. Minimize repetitive passes on any one portion of shoreline. Once you've run the same line for a while, move on to another area. Remember, you are responsible for your own wake.

For additional safety information, please visit www.wakeresponsibly.com, the US Coast Guard Auxiliary at www.cgauxed.org or the Water Sports Industry Association at www.wsia.net.

Correct Craft
Making Life Better

ABOUT CORRECT CRAFT: Celebrating 98 years of excellence in the marine industry, Correct Craft is a Florida-based company with global operations. Focused on "Making Life Better," the Correct Craft family includes Nautique, Centurion, Supreme, Bass Cat, Yar-Craft, SeaArk, Parker, and Ingenuity boat companies, Pleasurecraft Engine Group, Indmar Marine Engines, Velvet Drive Transmissions, Mach Connections, Merritt Precision, Osmosis, Watershed Innovation, and Aktion Parks. For more information, please visit www.correctcraft.com

We couldn't tell our story alone; it takes a well-rounded team to unite towards an ultimate vision. Not only does this team have to perform well on their own, they have to come together in a way that conveys a cohesive message and story. Finding a team that gels and cooperates effectively can often be an elusive goal for many companies, but for Supreme Boats this team's collaboration has resulted in Worlds best work fit for the most valuable towboats. We would like to thank the amazing team members who made this 2024 Supreme Boats catalog possible, our team consists of great partners, team athletes, ambassadors, and of course a dedicated family of employees.

Goff Photography | Robert Snow Photography | Lens Media House | Proof Creative | Galactic Ideas | The Mills Family | The Mauzy Family | The Spanish R and Rolleri Family | Justin Green | Nancy Crowell | Filip Matic | Noah Ray | Parker Sheppard | Blake Wasden | Ken "Cowboy" Scribner | Shell Buchner | Evan Stillahn | Alexis Machado | JB O'Neill | Taylor McCullough | Chad Lowe | Kenzie Hickey | Sean Cummings | Sean Silveira | Tyler Stewart | Ava Stewart | Jake Breedlove | Tiffany Hickey | Carley Stone | New Melones Lake and Marina | The Coffin Dance by Tony Igy - Astronomia (Remix)

SURF
WAKE
R⚡DE



SUPREMEBOATS
SURF WAKE RIDE



www.supremetowboats.com